



NIDUS

Network for Investigation  
of Delirium II:  
Unifying Scientists

NIA R33AG071744

**John W. Devlin, PharmD, MCCM, FCCP, BCCCP**  
**Associate Scientist,**  
**Division of Pulmonary and Critical Care Medicine,**  
**Brigham and Women's Hospital**  
**Lecturer in Medicine, Harvard Medical School**  
**Professor of Pharmacy,**  
**Northeastern University**  
**Boston, MA**

**BRIGHAM HEALTH**



**BRIGHAM AND  
WOMEN'S HOSPITAL**

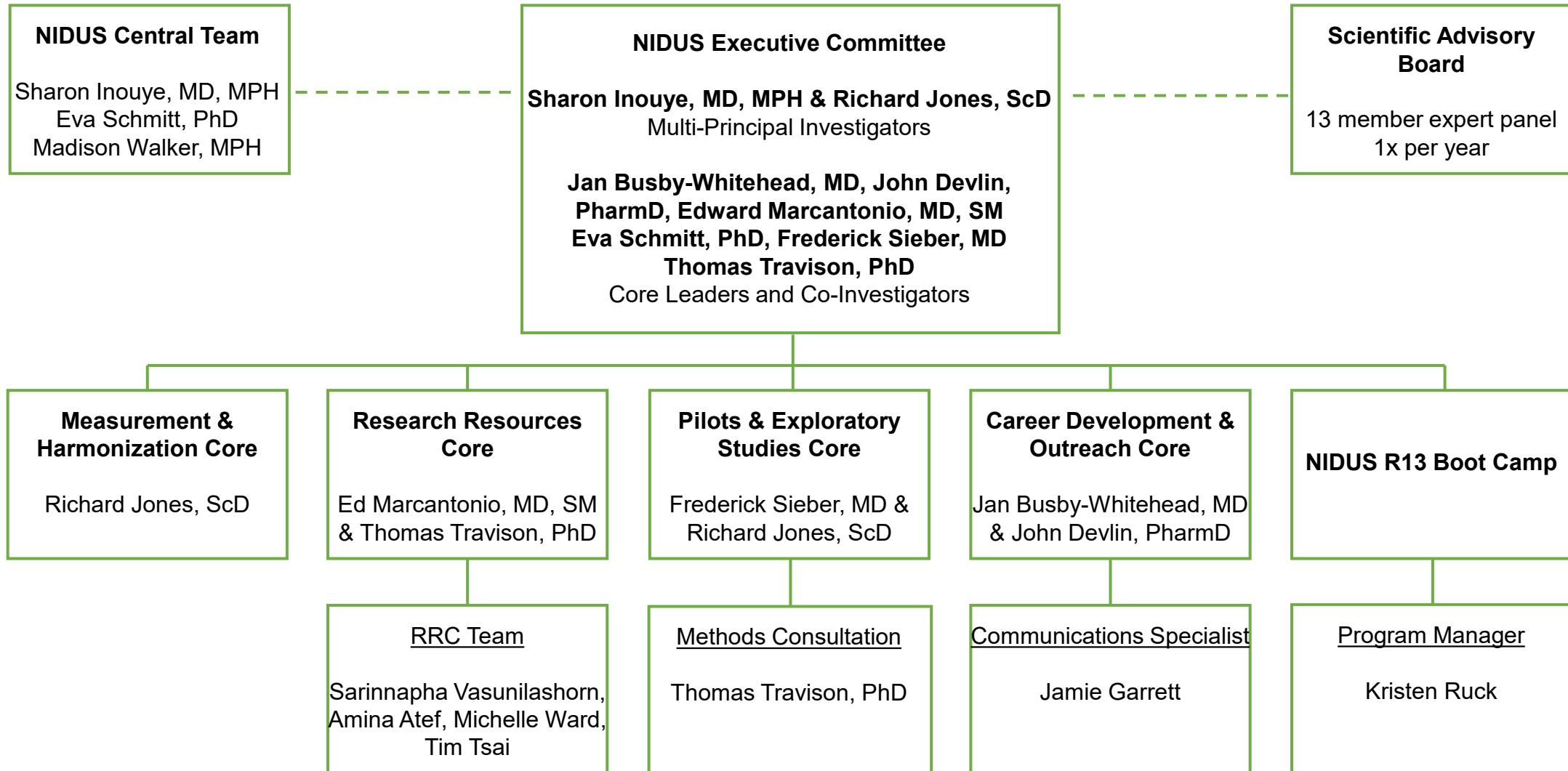


**Northeastern University**

*Bouvé College of Health Sciences  
School of Pharmacy*



- ***NIDUS II: Advanced-Stage Development and Utilization of the NIDUS Research Infrastructure to Advance Interdisciplinary Aging Research in Delirium (MPI-Inouye/Jones)***, an NIA R33 Infrastructure grant.
- We will continue to expand the robust infrastructure created to realize the full potential of these resources.
- Purposeful utilization to conduct novel research to address important gaps in delirium, focusing on priority areas of advancing measurement, development of effective treatments, exploring pathophysiology, and delirium superimposed on ADRD.
- The network will purposefully utilize the existing NIDUS resources to advance research in priority areas.



# Join NIDUS and connect to Delirium Research



NIDUS

## What is NIDUS? Network for Investigation of Delirium: Unifying Scientists!

This NIA-funded\* research network is dedicated to advancing the study of delirium through collaborative studies, use of NIDUS research resources, career development opportunities, and dissemination of delirium science.

\*NIA grant no. R33AG071744, MPI: Inouye/Jones

## Interested in delirium research? NIDUS can help!

Visit [deliriumnetwork.org](https://deliriumnetwork.org) to join NIDUS, subscribe to our newsletter, & access our blog, news, and resources

### ➤ Measurement Harmonization Core

- To develop and expand innovative measurement methods related to harmonization of delirium measures and outcomes to unify the field

### ➤ Research Resources Core

- To develop and expand the NIDUS Research Hub to create a collaborative infrastructure that will seed future interdisciplinary studies

### ➤ Pilot/Exploratory Studies Core

- To promote collaborative interdisciplinary studies designed to utilize our infrastructure and provide fundamental scientific advances

### ➤ Career Development and Outreach Core

- To nurture the career development of early-stage investigators interested in delirium research, who will utilize the NIDUS II infrastructure to advance their research



[deliriumnetwork.org](https://deliriumnetwork.org)



[@nidus\\_delirium](https://twitter.com/nidus_delirium)



[@nidus-delirium.bsky.social](https://bsky.app/profile/nidus-delirium.bsky.social)



[nidus@hsl.harvard.edu](mailto:nidus@hsl.harvard.edu)



NIDUS

# Research Resources Core

## Delirium Research Hub

- Find studies and researchers!
- Includes study meta-data (like a “table of contents”) for study design, sample characteristics, collected biospecimens, neuroimaging, neuropsychological testing, and pharmacologic intervention.
- Searchable by all referent categories: Investigators, Study Status, Data Types, Availability of resources (data, biospecimens, bioimages) indicated
- A structured abstract is provided for each study
- The Hub consists of two databases:
  - Human Hub (>1800 indexed human studies)
  - Animal Hub (>375 indexed animal studies)

<https://deliriumnetwork.org/delirium-research-hub/>

## Delirium Bibliography

- Quickly search literature on delirium and acute care of older persons
  - Search by author, title, year, and/or keywords. Each article is indexed by keywords taken from MEDLINE and other relevant databases. Click on the title of the article to read the abstract, journal, etc.
- updated monthly

<https://deliriumnetwork.org/bibliography/>



deliriumnetwork.org



@nidus\_delirium



@nidus-delirium.bsky.social



nidus@hsl.harvard.edu



NIDUS

# Pilot & Exploratory Studies Core

## NIDUS II Pilot Grants

Competitive, one-year award to support investigation into prioritized areas of delirium research:

- Inter-Relationship of Delirium and ADRD
- Measurement of delirium
- Pathophysiology
- Clinical Trials--Intervention Development

Pilot studies are expected to generate:

- Key preliminary data
- Exploratory or proof-of-concept pilot work
- Feasibility studies
- Secondary analyses that define a clear pathway to future large-scale studies and grants

## What do applicants need to know?

Applicants are expected to utilize NIDUS resources and form a multi-institutional collaborative group for their pilot project proposals.

The initial application submission is a short Letter of Intent (LOI). Following review of the LOIs, the top applicants will be invited to submit a full pilot application.

For full Requirements, Criteria, & Application Instructions visit [deliriumnetwork.org/pilots/](https://deliriumnetwork.org/pilots/) or scan the QR code:



[deliriumnetwork.org](https://deliriumnetwork.org)



[@nidus\\_delirium](https://twitter.com/nidus_delirium)



[@nidus-delirium.bsky.social](https://bsky.app/profile/nidus-delirium.bsky.social)



[nidus@hsl.harvard.edu](mailto:nidus@hsl.harvard.edu)



NIDUS

# Career Development & Outreach Core

**NIDUS University** is the one-stop shop for answers to “How To” questions! NIDUS University makes it easier to identify pertinent NIDUS resources relevant to common types of research queries/projects. Find answers to your frequently asked questions! All NIDUS University resources and materials were developed by delirium research experts. <https://deliriumnetwork.org/career-development/nidus-university/>

**NIDUS Blogs** are focus on research topics relevant to the NIDUS mission or on research projects carried out with the support of the NIDUS Boot Camp or pilot grants. We have prioritized these to be authored by NIDUS Boot Camp alumni and prior pilot/seed awardees. Blogs serve as an official NIDUS publication which can be listed on CVs. <https://deliriumnetwork.org/blog/>

**NIDUS Webinars** have expert speakers on various delirium-related topics of interest to trainees and the NIDUS community to help advance their work and knowledge. All of the webinars are recorded and posted on the website for re-watching or asynchronous viewing if unable to attend the live session. <https://deliriumnetwork.org/webinars/>



deliriumnetwork.org



@nidus\_delirium



@nidus-delirium.bsky.social



nidus@hsl.harvard.edu



NIDUS

# Career Development & Outreach Core

NIDUS  
easi  
answ  
by d

## Diversifying Clinical Research Funding

Given the current challenges with federal funding, investigators may need to consider alternative funding resources for clinical research. Many clinical research funding sources exist outside of traditional NIH mechanisms. The goal of this NIDUS seminar is to learn about clinical research funding through foundations, institutions/research networks, PCORI and industry.

Wednesday,  
**November 12, 2025**  
**11:00 AM-12:00 PM**  
**ET**

NIDUS  
with  
NIDUS  
can

- **Foundations:** Sharon Inouye MD, MPH
- **Institutions/Research Networks:** Esther Oh, MD, PhD
- **PCORI:** Biren Kamdar, MD, MSc
- **Industry:** John Devlin, PharmD

NIDUS  
NIDUS  
post  
<https://deliriumnetwork.org/webinars/>

Meeting ID: 949 5545 5346 | Phone: +1 646 558 8656

Registration Link: <https://zoom.us/meeting/register/iCWvM8EMTQgLRvA6xY1CHA>



[deliriumnetwork.org](https://deliriumnetwork.org)



@nidus\_delirium



@nidus-delirium.bsky.social



[nidus@hsl.harvard.edu](mailto:nidus@hsl.harvard.edu)



NIDUS

# NIDUS II Delirium Boot Camp



Dr. Sharon K. Inouye

**Dr. Sharon K. Inouye founded the Delirium Boot Camp in 2013.**

The goal of Boot Camp is to develop a multidisciplinary pipeline of well-trained translational, epidemiologic and clinical delirium researchers.

The 2.5-day Boot Camp is designed for faculty and research

fellows with previous research training and experience who plan to continue researching delirium.

## Boot Camp Eligibility Basics

- Previous training in clinical research fundamentals
- Previous research experience (minimum 1-2 years)
- MD, PhD or other doctoral level degree
- Interest and passion for delirium research

## Boot Camp Offerings

- Presentations by world-renowned Delirium Experts
- NIH-style mock grant reviews of mentee proposals
- In-depth training on use of the CAM
- Multiple didactic sessions covering various topics relevant to delirium research (clinical & translational)
- Networking sessions on key career-development topics
- Mentoring and Breakout sessions with the experts
- **Has trained n=152 Junior Delirium Researchers**

For full Eligibility details, Program info, and the Boot Camp Application visit

[deliriumnetwork.org/career-development/nidus-bootcamp/](https://deliriumnetwork.org/career-development/nidus-bootcamp/)

Or scan the QR code



**Next Bootcamp: June 12-14, 2026 at U of Colorado (before ADS)**



[deliriumnetwork.org](https://deliriumnetwork.org)



[@nidus\\_delirium](https://twitter.com/@nidus_delirium)



[@nidus-delirium.bsky.social](https://bsky.app/@nidus-delirium.bsky.social)



[nidus@hsl.harvard.edu](mailto:nidus@hsl.harvard.edu)



**Preclinical and translational models for delirium:  
Recommendations for future research from the NIDUS  
delirium network**

Sarinnapha M. Vasunilashorn<sup>1,2,3</sup> | Nadia Lunardi<sup>4</sup> | John C. Newman<sup>5,6</sup> |  
Gregory Crosby<sup>2,7</sup> | Leah Acker<sup>8</sup> | Ted Abel<sup>9</sup> | Seema Bhatnagar<sup>10,11</sup> |  
Colm Cunningham<sup>12,13</sup> | Rafael de Cabo<sup>14</sup> | Laura Dugan<sup>15,16,17</sup> |  
Joseph A. Hippensteel<sup>18</sup> | Yumiko Ishizawa<sup>2,19</sup> | Shouri Lahiri<sup>20</sup> |  
Edward R. Marcantonio<sup>1,2,21,22</sup> | Zhongcong Xie<sup>2,19</sup> | Sharon K. Inouye<sup>2,21,22</sup> |  
Niccolò Terrando<sup>23,24,25,26</sup> | Roderic G. Eckenhoff<sup>11</sup> | for the NIDUS Delirium Network

FEATURE ARTICLE

**Advancing Delirium Treatment Trials in Older  
Adults: Recommendations for Future Trials  
From the Network for Investigation of Delirium:  
Unifying Scientists (NIDUS)**

John W. Devlin, PharmD, MCCM<sup>1,2,3</sup>

Crit Care Med 2025

Hosie A, Agar MR, Ries N, Hepworth A, Sanders R,  
Kramer K, Evered L, Ma D, Devlin JW. **Understanding  
the unique ethical challenges in randomized  
controlled trials of delirium Interventions for older  
adults: a NIDUS rapid review.** Anesthesia and Analgesia  
2025 (in press)




NIDUS

Contact us!

Please contact us with any questions at [NIDUS@hsl.harvard.edu](mailto:NIDUS@hsl.harvard.edu)

Or reach out to the NIDUS coordinator: Molly Horowitz at  
[mollymackler@hsl.harvard.edu](mailto:mollymackler@hsl.harvard.edu)

Follow us on social media:

 @nidus\_delirium

 @nidus-delirium.bsky.social  
Bluesky

 NIDUS (The Network for Investigation of Delirium: Unifying Scientists)



deliriumnetwork.org



@nidus\_delirium



@nidus-delirium.bsky.social



nidus@hsl.harvard.edu