

## **AROUND THE EQUATOR WITH CLIN-STAR**

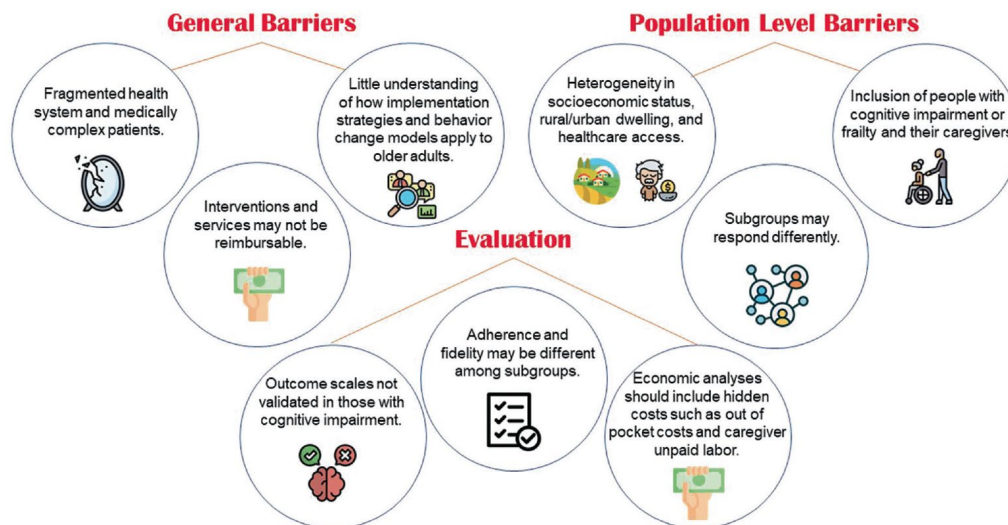
- A Journal of the American Geriatrics Society series highlighting challenges adhering to EQUATOR Network reporting standards for researchers studying older adults in medical, surgical, and related specialties.
- Mini Series Editors: Chris Carpenter, MD, MSc and Thomas M. Gill, MD

### **Please review the Editorial introducing this Series and subsequent papers to date:**

- Carpenter CR, Gill TM. [Transparent transdisciplinary reporting in geriatric research using the EQUATOR Network](#). J Am Geriatr Soc. 2022;70: 3352-3355. (Editorial)
- [Around the EQUATOR with Clinician-Scientists Transdisciplinary Aging Research \(Clin-STAR\) Principles: Implementation Science Challenges and Opportunities](#)
- [Around the EQUATOR with Clin-STAR: Prediction modeling opportunities and challenges in aging research](#)
- [Around the EQUATOR With Clin-STAR: AI-Based Randomized Controlled Trial Challenges and Opportunities in Aging Research](#)
- [Around the EQUATOR with Clin-STAR: Systematic Reviews of Intervention Effectiveness; Challenges and Opportunities](#).

## **AUTHOR INSTRUCTIONS**

- Title template: *Around the EQUATOR with Clin-STAR: [Topic Focus EQUATOR Reporting Standard] Challenges and Opportunities*
- Specs:
  - Text (words): 3500 max (Special Article category)
  - Unstructured abstract (words): 150 max
  - References: 50
  - Table: 1: Specific barriers to applying the EQUATOR Network checklist in older adult research (select a handful of prominent rows from the checklist, not the entire checklist)
  - Table 2: Approaches to overcome the barriers identified in Table 1
  - Figure (example below): Image depicting the challenges entailed applying the EQUATOR Network reporting standard to research in older adults



- **Text format should include:**
  - Key Points
  - Why This Study Matters
  - Introduction: General overview of the geriatric relevance and EQUATOR Network reporting standard focused on
  - Discussion describes point-by-point challenges applying components of the EQUATOR Network standard from Table 1 with illustrative citations pertinent to geriatric researchers.
  - Discussion then describes opportunities to improve the value of research reporting for the type of investigations focused on by the EQUATOR network focus.
  - Conclusion synthesizes the potential to “geriatricize” the EQUATOR network reporting standard that is the focus of the submission.
- **Include: Acknowledgement: Clin-STAR is supported by National Institutes of Health National Institute on Aging grant U24AG065204.** The funder had no role in developing the content of this manuscript.
- **Authorship:** a team of two to four authors. For the medical, surgical, and related specialties, recipients of a GEMSTAR award (and/or other early-career leaders in the field) along with their senior mentors within aging and clinical specialty would be best positioned to write the literature updates. Although nominations are welcome, these updates will generally be solicited by the series editors.
- **Pre-review** by *Around the EQUATOR* series editors prior to submission to JAGS. Submit final draft, including peer reviewer suggestions, to [andrea@afar.org](mailto:andrea@afar.org)
- **JAGS peer review.** All submissions will undergo a thorough external peer-review process and are not guaranteed acceptance.
- **Submission cover letter:** mention submission as Special Article for *Around the EQUATOR*.

**JAGS submission elements include:**

- Running title:
- Authors:
- Corresponding author/email:
- Author Titles
- Key words:
- Key points:
- Word count:
- Why does this paper matter:
- Abstract:
- Text:
- Author Contributions:
- Acknowledgement:
- Conflict of interest:
- Funding:
- Sponsor’s role:
- References:
- Table
- Figure